

RECOM™

Pre-stained Protein Markers

Wide Range

- Cat.No.REC 001
RECOM™ BLUE Wide Range
- Cat.No.REC 002
RECOM™ DUAL Wide Range
- Cat.No.REC 003
RECOM™ SPECTRUM Wide Range

25-50 Lanes per Marker (250 µl)

Store at
-20°C

Applications

- Recombinant
- Blue/Dual/ Colour
- Accurate and Wide Size Range
- Highlighted Bands for increased discrimination
- Ladder Banding.

RBC
It's the Joy of Discovery

Real Biotech Corporation

Real Biotech Corp. is a leading R&D based life science solutions provider.
For more information on our extensive and innovative life science range please visit our web site.

Introduction

Real Biotech's pre-stained recombinant protein markers are the best in class reference proteins for SDS-PAGE analysis. 10 discrete recombinant protein bands provide a wide and accurate range of reference. Marker is ready-to-load on SDS-PAGE gels with no requirement for boiling.

Wide Range size markers are suitable as reference banding for proteins between 7 kDa to 240 kDa.

The proteins are covalently linked to chromophores, enabling visible detection during electrophoresis or following electrophoretic transfer.
The 25kDa/75kDa proteins are concentrated for easier band identification.

Due to coupling of chromophore to the proteins in pre-stained markers, their apparent molecular weight may shift slightly in SDS-PAGE relative to un-stained proteins. This shift does not change batch-to-batch, therefore we have labelled the prestained markers accurately to account for this shift. For highest accuracy (>95%), RECOM™ un-stained protein markers are recommended.

REC007: RECOM Unstained Wide Range
REC008: RECOM Unstained Ruler

Recommended loading volume

Optimum 10 µl/lane for a mini-gel, load range 5-10 µl (10x8cm², 0.75mm or 1mm thick)
Optimum 20 µl/lane for a large-gel, load range 15-30 µl (30x20cm², 1mm or 1.5mm thick)

Recommended storage condition

-20°C for one year. For best results please aliquot into small volumes and store at -20°C. For temporary storage 4°C is recommended, prevent freezing & thawing.

Caution

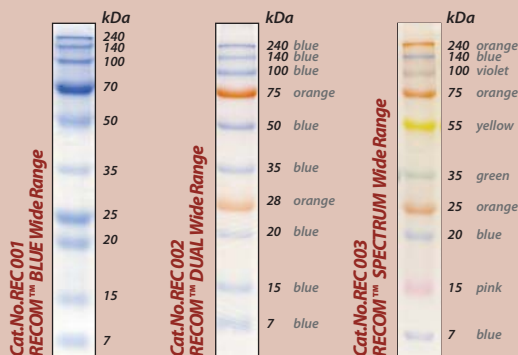
Repeated freezing & thawing, long-term storage and re-use of pipette tip may degrade proteins rapidly. These markers are provided as a ready to load format, meaning that there is no need to boil before use. If visible precipitation of SDS occurs following long-term storage at -20°C precipitant may be dissolved by a short heating step at 50-80°C for a few minutes.

RECOM™

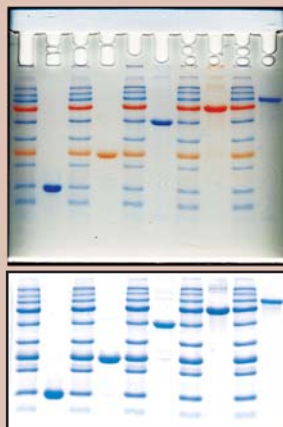
Pre-stained Protein Markers

Wide Range

Wide Range Markers



Before and After R250 staining



Cat.No.REC 002 RECOM™ DUAL Wide Range

